



RDM

ABOUT US

RDM ENGINEERING was established in 1972 to operate in Iron and Steel Industries at a 40m² small workshop,





ABOUT
US





ABOUT US



ABOUT US

And now is a custom steel fabricator of heavy industrial equipment, tanks and other steel module fabrications, with a total usable area of 14,000 m² in Çanakkale/Turkey,

TOTAL AREA 14,000 SQM

500 TPM STEEL STRUCTURE PER MONTH

300 TPM MECHANICAL WORKS PER MONTH



Our Vision;

The vision of our firm who has filled a time almost a half century in the Iron and Steel Sector and has become a registered trademark is: Being the leader in Turkey without compromising on quality and the trust on us and to have a say in the international arena.

Our Mission;

Being continuously open to the development and technological advancement, being the first choice, solution partner and indispensable for our customers by combining our accumulation of knowledge, experience of manufacturing with the constructive and creative ideas of our workers.

Quality Policy;

To manufacture the best quality most accurately with favorable cost at the first time together all our employees without doing any repeat or repair and to ensure maximum customer satisfaction.
To manufacture high quality, not to control the quality at the end of the manufacture.



MANAGEMENT DEPARTMENT;

15 ENGINEERS

15 TECHNICIANS

MANUFACTURING DEPARTMENT;

10 FORMENS

30 WELDERS

70 WORKERS



HEALTH and SAFETY



RDM carries on all of its activities by providing sufficient health and safety conditions and completes the works correctly and on time.

It has seen the training the workers about the Health and Safety at Work to minimize the damages on workers and on other people by the activities, obeying the current Health and Safety at Work Legislation and the ones of the Member associations by seeing the required announcements, the education and consciousness-raising activities as the most important priorities.

Assessment of danger and risk, determining the current danger and risks and providing all possible protection has become the integral engagements of all its activities and products and it has seen advancing the working environment and health and safety at work applications as a policy

CERTIFICATES

TSE-EN-ISO 9001:2015 Quality Management Systems Certificate.

EN 1090-1:2009+A1:2011 EXC3 - CE Certificate of Conformity Factory Production Control - CE MARKING.

TS-EN-ISO 3834-2 Availability to Welding issued.



CERTIFICATES

TS-EN-ISO 14001 Environment
Management Systems Certificate.



Quality Control Chief has an
international Welding Engineer and
Inspector Certificates issued.

TS-EN-ISO 45001:2018 Occupational
Health and Safety Management
Certificate.





Our institution acknowledges and undertakes training all of its workers, obeying all current legislation and administrative regulations regarding the environment and other conditions that it is naturally subjected to with the aim of advancing the Environment Management System and prevents the environment pollution.

Environmental Policy;

RDM, with the administration which aims minimize the environmental affect of all of its activities based on the "RESPECT TO THE NATURE" policy, has accepted not polluting the environment, protecting the natural resources by being always sensitive and careful as an indispensable part of its activities.





CNC BOHRWERK – Ø180 Five axis. X: 14000mm, Y: 5000, Z: 1300mm 30 tons 60 tons 100 tons capacity – 1 pcs

CNC BOHRWERK – Ø180 Five axis. X: 6000mm, Y: 3000, Z: 1800mm 30 tons capacity – 1 pcs

CNC BOHRWERK – Three axis. X: 3000mm, Y: 2450, Z: 1400mm 15 tons capacity – 1 pcs

BOHRWERK – Tos Ø90 X:1000mm, Y:1000mm, Z:1500mm – 2 pcs

CNC VERTICAL MACHINE - 3 AXIS X: 1500mm, Y: 700, Z: 600mm – 1 pcs

HYDRAULIC PRESS – Capacity 500 Tons – Capacity 400 Tons - Capacity 200 Tons - 3 pcs

MILLING MACHINE – Universal Milling Machine – 2 pcs

BANDSAW MACHINE - Ø350mm - Ø280mm – 2 pcs

DRILL MACHINE – 2 pcs

CNC OXY-PLASMA MACHINE – 3000 x 18000mm (double-bridge) – 1 pcs

LATHE MACHINE – Ø2200x8000mm Universal Lathe Machine – 1 pcs

Machine Area

Machine Area

LATHE MACHINE – Ø1000x3000mm Universal Lathe Machine – 1 pcs

LATHE MACHINE – Ø700x4000mm Universal Lathe Machine – 1 pcs

LATHE MACHINE – Ø600x2000mm Universal Lathe Machine – 1 pcs

LATHE MACHINE – Ø500x1500mm Universal Lathe Machine – 1 pcs

CNC LATHE MACHINE – 12" x 1200mm – 1 pcs

BENDING MACHINE – L:4000mm t: 100mm – 1 pcs

BENDING MACHINE – L:2000mm t: 50mm – 1 pcs

BENDING MACHINE – L:1500mm t: 20mm + L:2000mm t: 20mm – 2 pcs

COMPRESSOR – Screw – 4 pcs

CRANES – 5, 10, 16, 30, 2x50 Ton Capacity Overhead Crane – 14 pcs

HI-UP CRANE – 30 Tons Capacity - 60 Tons Capacity – 2 pcs

GENERATOR – 400 KW – 1 pcs

ROTATOR – Workpiece 30 Tons – 50 Tons – 3 pcs

VSR – Vibration Stress Relief Machine – 1 pcs

WELDING MACHINE – CNC Control Column Boom Machine MIG/MAG + SAW X: 12000mm Y: 6000mm – 2 pcs

WELDING MACHINE – Electric Arc Welding Machine – 47 pcs

WELDING MACHINE – MIG/MAG Welding Machine – 20 pcs

WELDING MACHINE – TIG Welding Machine – 4 pcs

WELDING MACHINE – Synergistic Welding Machine – 1 pcs

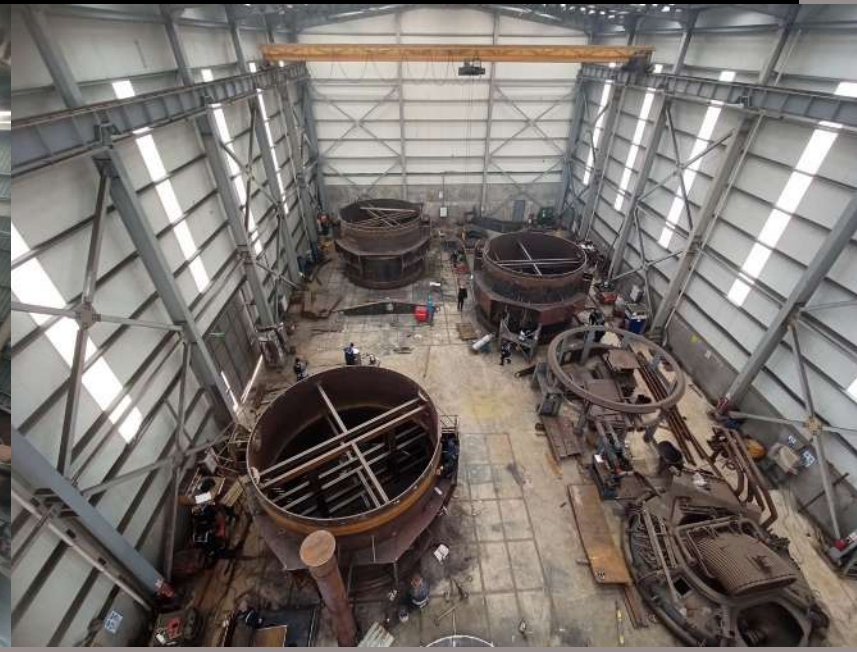
WELDING MACHINE – Automatic Submerged Arc Welding Machine – 9 pcs



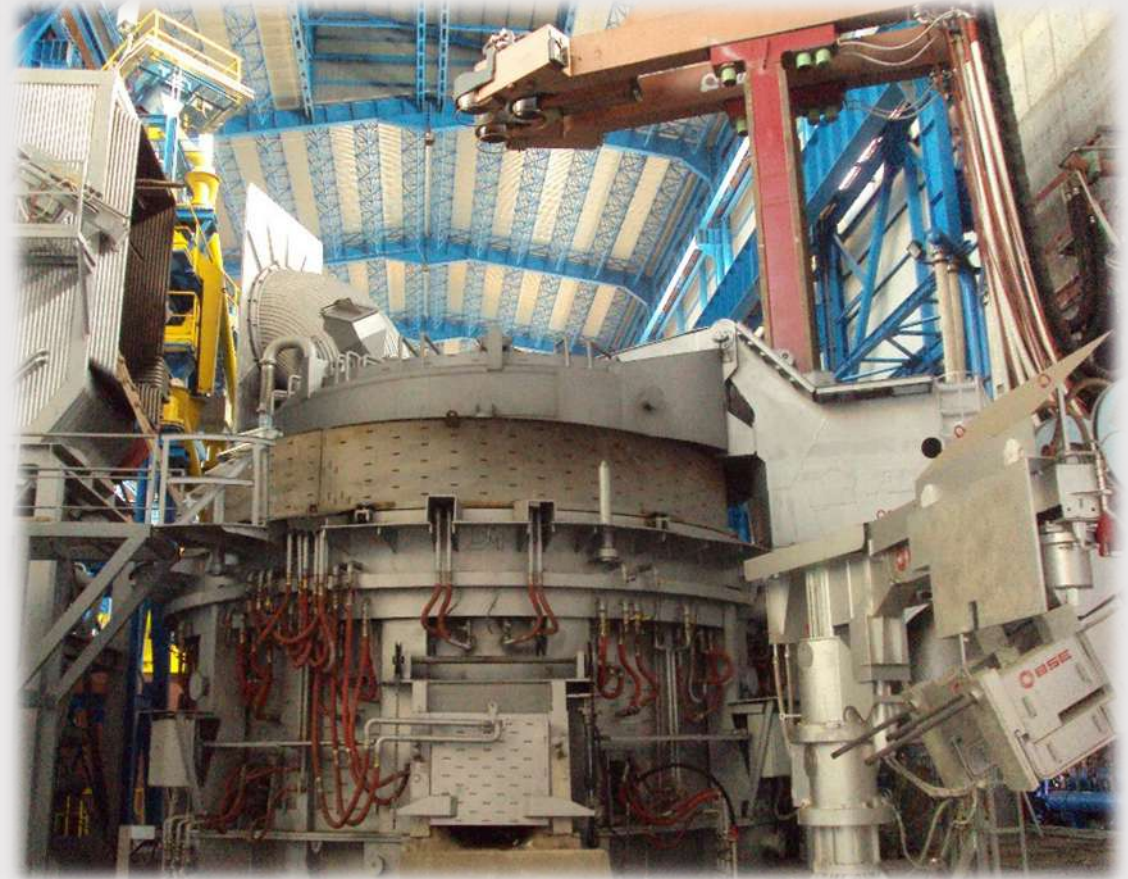
SAMPLE OUR REFEN CES



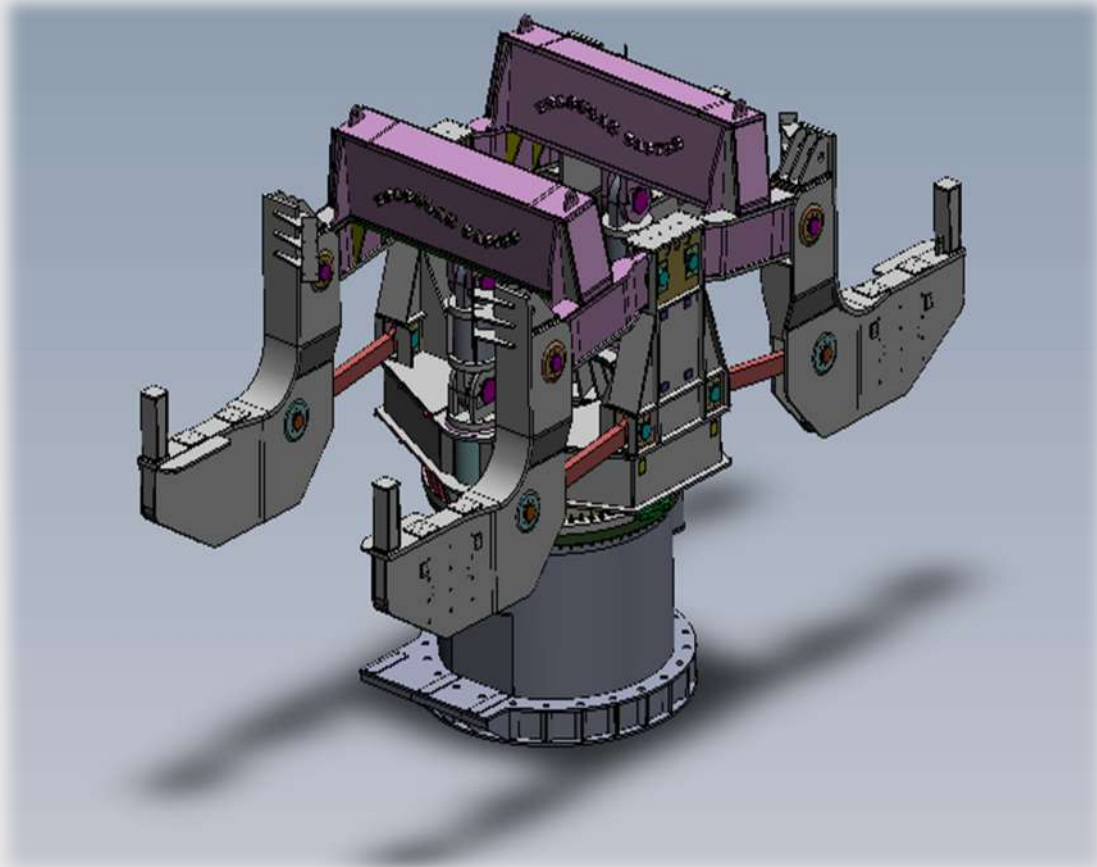
Sample Photos of Our Products



YOLBULAN BASTUG - 160 TON EAF



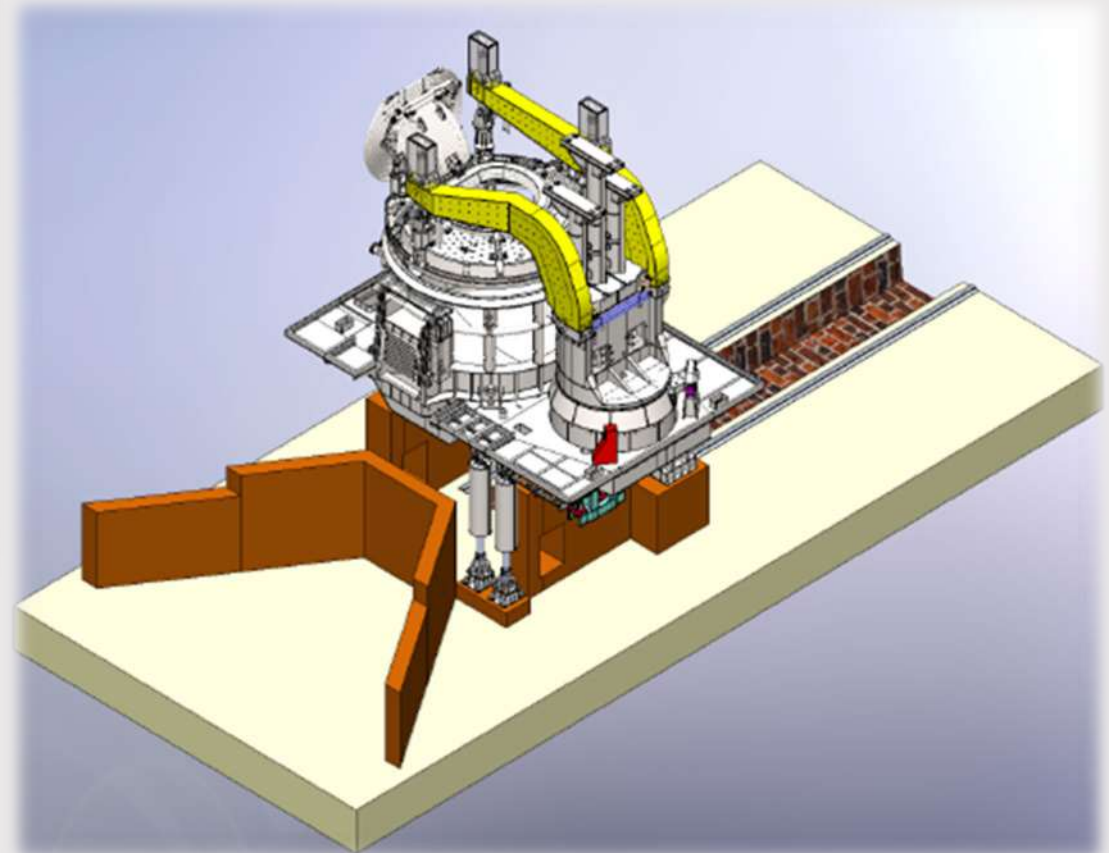
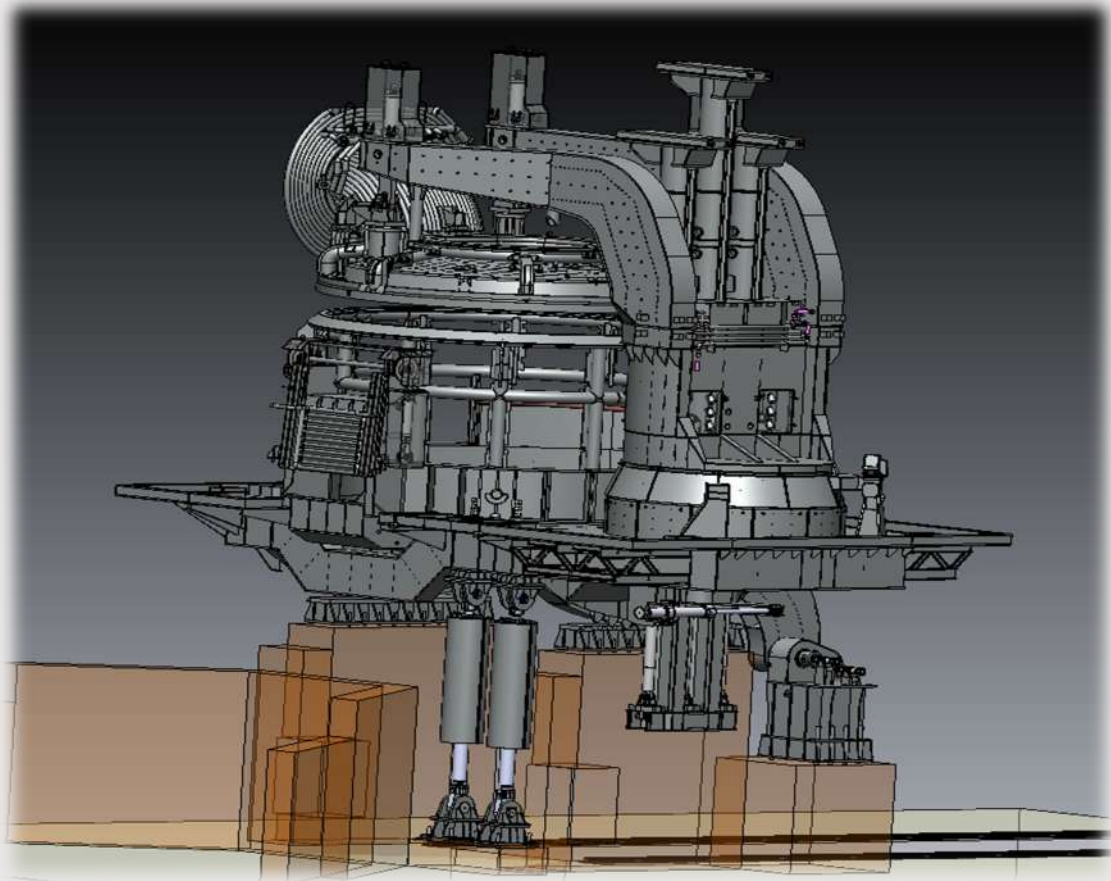
YOLBULAN BASTUG / CONCAST PROJECT / LADLE TURRET



RIVA INDUSTRIES-MELTSHOP EQUIPMENTS



CONCAST / ESTAR - 100 TON EAF (complete)



SUEZ STEEL Co. - Lower Shell – Upper Shell



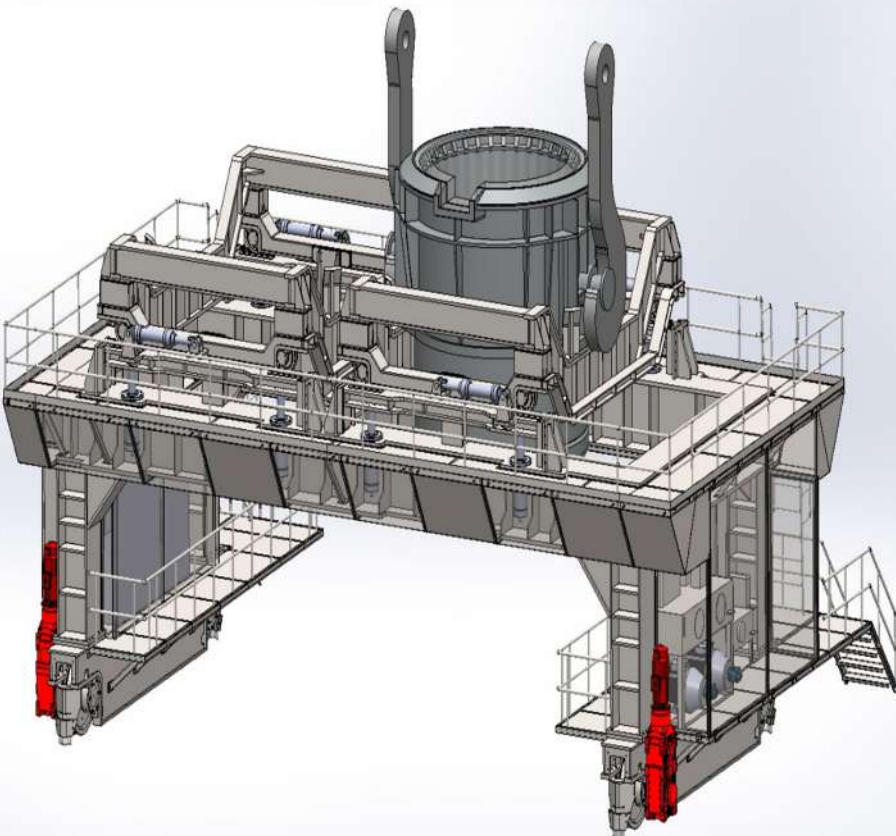
IZMIR DEMIR CELIK A.S - O.P.H ROLLING MILL Container, Grid, Role, Alignment, Skids & Posts



IZMIR DEMIR CELIK A.S - O.P.H ROLLING MILL Container, Grid, Role, Alignment, Skids & Posts



ASIL CELIK A.S - INGOT LADLE CAR



ASIL CELIK A.S. - VACUUM VESSEL



OZKAN CELIK A.S. - VACUUM VESSEL



DANIELI – WATER COOLED ROOF



DANIELI – VACUUM TANK COVER



DANIELI – LOWER SHELL



SİDDİK KARDESLER – 2 x 200 TON LADLE TURRET



EMRE MAKINA – WITHDRAWAL and STRAIGHTENING UNIT



TOSCELIK- LADLE SHROUD MANIPLATOR



TOSCELIK- LOWER SHELL



TOSCELIK- TUNDISH



TOSCELIK – LADLE CAR



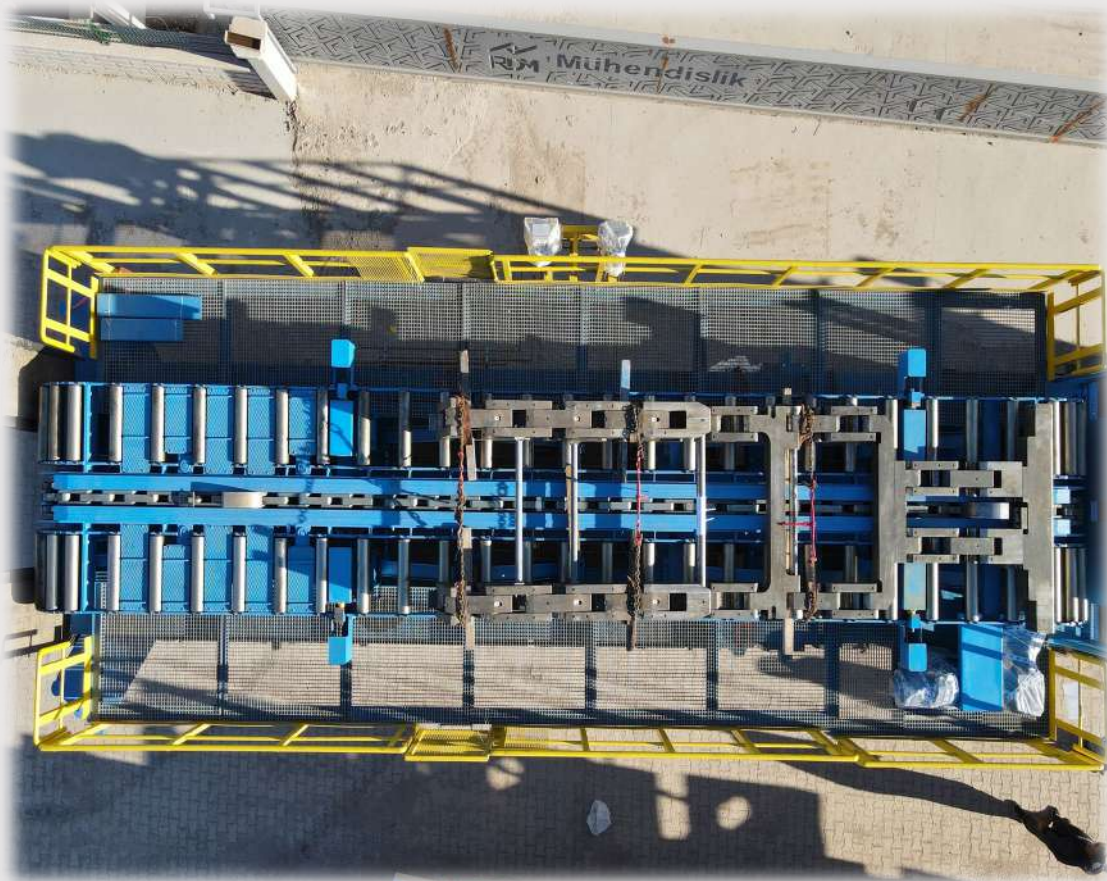
TOSCELIK – SCRAP CAR



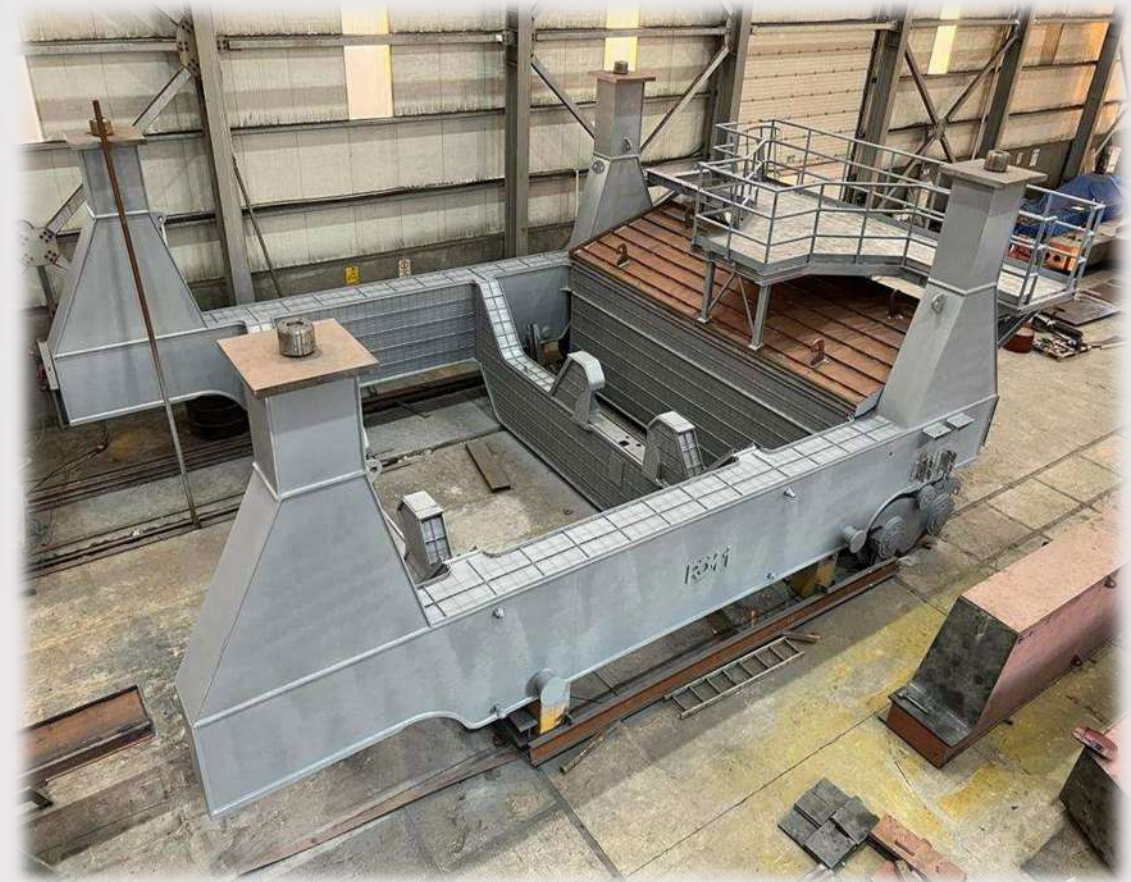
TOSCELIK – TUNDISH CAR



TOSCELIK – DUMMY BAR TOP FEEDING SYSTEM



TOSCELIK – LADLE SHELL CAR



TOSCELIK – LADLE TURRET 2 X 280 TONS



TOSCELIK – LADLE TURRET 2 X 280 TONS



TOSCELIK – SHELL LIFTING BEAM



TOSCELIK - CONTAINER



ICDAS - SCRAP CAR



COLAKOGLU – LADLE 300 TON



COLAKOGLU – ROLLING FEET



KAPTAN D.C. – UPPER SHELL



KAPTAN D.C. - COLUMN



ZAPAD NOYA STROJ- 50 TON LF



ZAPAD NOYA STROJ – 50 TON LF



DILER DEMIR CELIK - COLUMNS



HEAD OFFICE
CUMHURİYET MAH. CORUH SK. NO.37/2
BUYUKCEKMECE - ISTANBUL

TEL: 90 212 868 00 60
FAX: 90 212 868 00 62
WEB: www.rdmengineering.com
E-MAIL: info@rdmmakina.com

FACTORY
ORGANIZE SAN.BOL. TURUNCU CAD.
No: 12-13 BALIKLICESME
BIGA - CANAKKALE



THANK
YOU